

Railert

Automatic Tag Reader

The Railert Automatic Tag Reader system bridges the gap between traditional hand-held data recorders and higher-priced, full-featured AEI systems.

Collecting tag data with a hand-held reader is overhead intensive. Purchasing a traditional AEI system is expensive and some of the features may be more than you need. Until now, the options were limited. The Railert ATR has been designed to offer a simplified, lower cost option.

Railert ATR is a single-antenna unit with modular components mounted inside a NEMA 4 box.



The modular design makes installation and repairs fast and easy; and the NEMA 4 box eliminates the need for expensive shelters. Each unit is fully assembled and tested

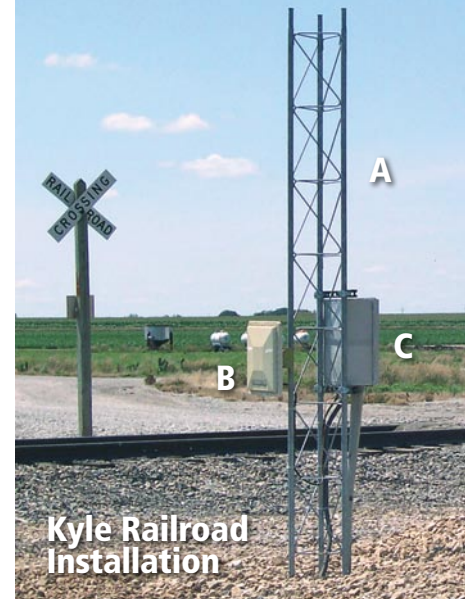
directly in the factory prior to shipment. The ease of installation allows the Railert ATR to have a single price which includes installation. This is yet another advantage over the traditional AEI systems.

The system accurately captures data from radio frequency (RF) tags mounted on a car or locomotive traveling up to 30 mph, at infrequent intervals and in all types of weather.

Reports are generated instantly and delivered via e-mail.

Easier to buy, simple to operate, minimal maintenance... and from one of the most trusted names in rail communications – Comet Communications & Signal, Inc.

The Railert ATR does not report the presence of non tagged cars and therefore it is not meant for use where an AAR S-918 compliant AEI system is required.



A—Tower, B—Antenna, C—Railert ATR Control Box